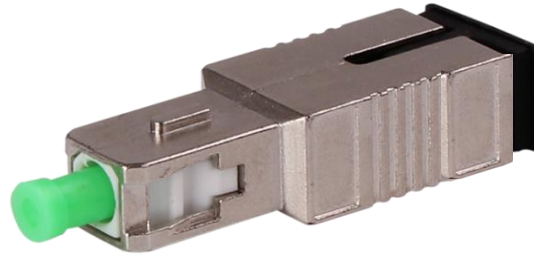


OATX-06SA

Single Mode Attenuator



Our single mode attenuator OATX-06SA features a zinc alloy housing, ceramic sleeve, and PET+GF sleeve holders. It has been tested to ensure quality through vibration test, thermal cycling, impact resistance, and others.

Features:

Performance Specifications	
Characteristics	Single Mode (9/125um)
Attenuator Range	1-20dB
Operating Wavelength	860, 1310nm, 1550nm
Return Loss (PC/UPC/APC)	>45/55/65db
Attenuation Accuracy	+0.5db (for 1-5 dB) +0.75dB (for 6-10 dB) +10%dB (for 11-20 dB)
Operating Temperature	-20-+75C
Storage Temperature	-40-+75C
Mating Durability	>1000 Cycle

Mechanical Specifications		
Body Dimension (mm)	32.8(L)*12.7(W)*9.3(H)	
Material	Oust CAP-1	PP
	Oust CAP-2	PVC
	Sleeve Holder	Pet + GF
	Spring	SUS304

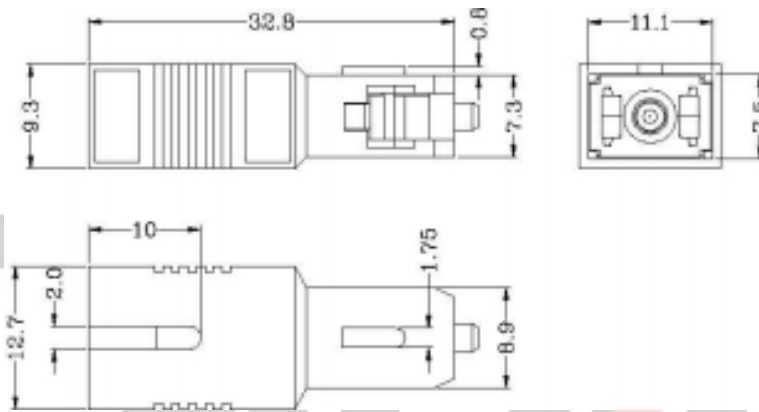
OATX-06SA

Single Mode Attenuator



	Sleeve	Ceramic
	Copper Ring	CO
	SC/PC/APC- Ferrule	ZrO2
	Whit Stepper	PBT
	Housing	Zinc Alloy

Dimensions:



Test Procedure:

- Optical Characteristics
- Vibration Test
- Thermal Cycling
- Impact Resistance
- Thermal Aging
- Humidity Resistance
- Others

Ordering:

OAT6-06SA SC/APC Single Mode Fixed Fiber Optic Attenuator, 6dB 10pcs/Pack