

OPP-0624AW

Optic Patch Panel 19" 24 SC simplex, ABS white



Is a plastic fiber optic terminal box that load plastic splitter cassette 1x8 or 1x16 for optical fiber splitting and distribution. It supports 16 drop cable output and cable entry without cutting. It is used for outdoor wall mounted or pole mounted application

Features:

Specification	
Material	ABS + UV Plastic
Dimension	182.5 x 306.4 x 115.5
Splitter Cassette	2pcs D-1X8 or 1pc D-1X16
Splicing Capacity	16 Fibers
Cable Ports	2pcs M20 cable ports for $\Phi 6\sim 11\text{mm}$ cable entry
	1 Oval Port Supporting $\Phi 6\sim 18\text{mm}$ cable entry without cutting
	16pcs 2*3mm drop cable or 3mm round cable output ports
IP Rating	IP65 (Outdoor use, Waterproof)
Application	Outdoor wall mounted or pole mounted

Accessories:

Accessories		
Heat protection shrinkable sleeve	60mm*2.6*1.2	As per using capacity
Cable tie	3*120mm white	6 pcs
Countersunk Screws	C type 4*30 metal	4 pcs
Plastic Expansion Pipe	$\Phi 6\text{mm}$ plastic white	4 pcs
Insulating tape	0.15*17mm 8 yards black	1 roll

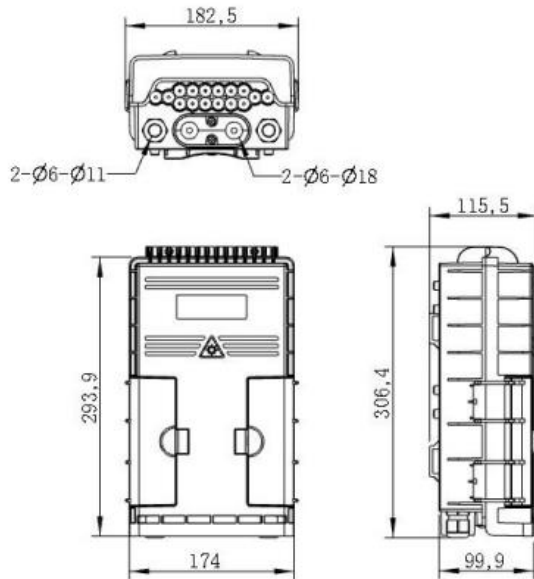
OPP-0624AW

Optic Patch Panel 19" 24 SC simplex, ABS white

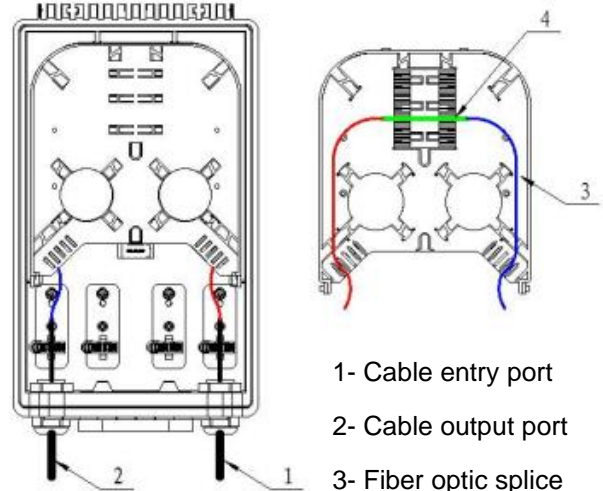


Dimensions:

Drawings: (mm)



Instruction:



- 1- Cable entry port
- 2- Cable output port
- 3- Fiber optic splice tray (back side with splicing module)
- 4- Heat protection shrinkable sleeve

APPLICATIONS:

- FTTH access network
- Telecommunication Networks
- CATV Networks
- Data communications Networks
- Local Area Networks